

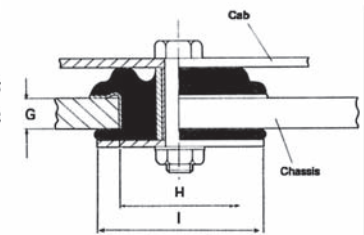
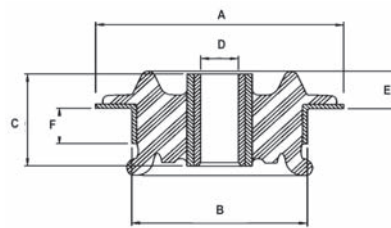
Cab Mounting



PART NO.	A	B	C	D	E	F	45 IRHD (Kg)		60 IRHD (Kg)	
							MIN	MAX	MIN	MAX
CB1650/1 (SLEEVED)	105	75	46	16.2	22	17	100	300	200	500
CB1650 (UNSLEEVED)	105	75	46	21	22	17	100	300	200	500
CB1814	120	89	47	25	21	23	150	428	250	713

Assembly Drawing

PART NO.	G	H MIN	H MAX	I MIN
CB1650 & CB1650/1	20	75.25	75.75	105
CB1814	25	89.25	89.75	120

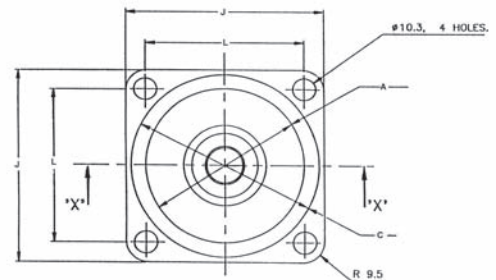
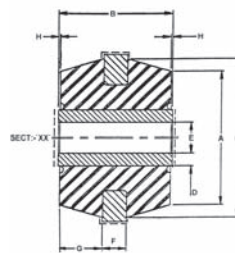


Multi-Directional Mounting

Multi-Directional mountings are used to accommodate vertical forces in both the upwards & downwards direction (i.e. positive & negative forces), and are ideal for applications such as Gearbox mountings where the torque applied during forward & reverse situations needs to be accommodated. Mountings should be used with Top & Bottom overload washers to provide a failsafe mounting arrangement.



PART NUMBER	A mm	B mm	C mm	D mm	E mm	F mm	G mm	H mm	J mm	L mm
CM890	68.2	54.2	78.8	6.6	16	12	19.7	1.4	90	69.8



DATA SHEET CAM 2011. Max compression load in Kg deflection in mm.

This information is for guidance only. Customers are recommended to contact us for further technical information on products and applications. We reserve the right to alter specifications or withdraw products without notice.