

# AV Hydro Mounting

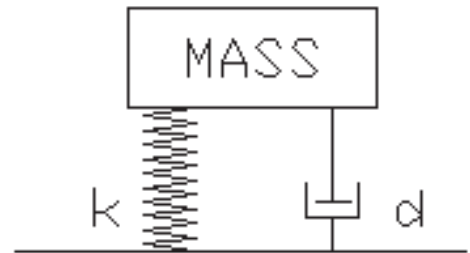
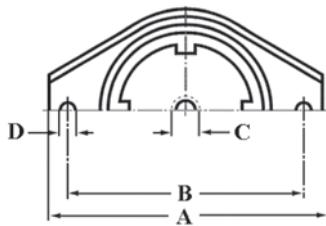
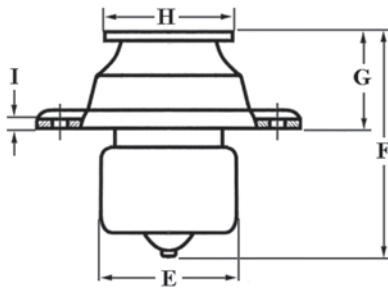
The 'AV Hydro Mounting' combines a load bearing rubber spring element (k) with the high damping characteristics of viscous damping achieved by a hydraulic pot and plunger (d). The arrangement allows a soft mounting system to give good isolation, whilst high amplitude 'Shaking' - is controlled at lower speeds - 'Tick-Over'. It is particularly suitable for variable speed engines; preventing drumming' of large unsupported panels; 1, 2 & 3 cylinder engines and where large movements & out-of-balance forces need to be absorbed.

**Applications Include:** Variable speed vehicles, Tractors, Cropsprayers, Fork trucks, Small Marine engines, 1, 2 & 3 Cylinder engines.



PART	A	B	C	D	E	F	G	H	I	Kg	mm
HYDV600	126	105	M10	11	64	89	32	45	2.5	150	8.5
HYDV600/1	140	116	M10	11	64	89	32	45	2.5	-	-
HYDV1500	126	105	M12	11	64	103	46	60	2.5	250	8.5
HYDV1500-75	126	105	M12	11	64	103	46	60	2.5	400	8.5
HYDV1500/1	140	116	M12	11	64	103	46	60	2.5	-	-
HYDV1750	175	138	M16	13	108.5	117	55	80	8	-	-

Max Load in Kg, Deflection in mm



DATA SHEET AVHM 2011. Max compression load in Kg deflection in mm.

This information is for guidance only. Customers are recommended to contact us for further technical information on products and applications. We reserve the right to alter specifications or withdraw products without notice.