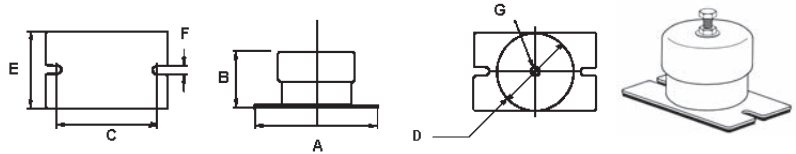


# Enclosed Spring Mounts



**Enclosed Spring Mountings** are a high deflection mounting suitable for static applications. They consist of multiple steel coil springs enclosed in a steel cup. The mountings are supplied with an oil resistant antislip pad under the steel base. Supplied with top fixing bolt to allow for levelling after installation. They give a maximum deflection of 25mm and upto 99% Vibration Isolation. High deflection (50mm) also available on request.

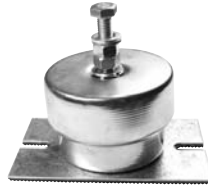
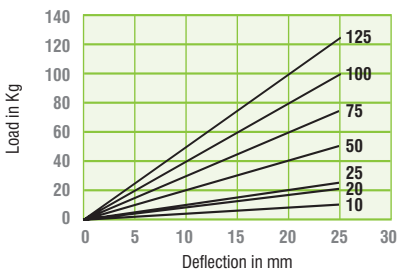
PART	A	B	C	D	E	F	G
ESS	75	73	59	55	40	10	M8
ESM	150	79	120	105	100	10	M12
ESL	230	80	200	175	150	12	M12

**Applications Include:** air conditioning, Fans, Static Generator sets, Low Speed Equipment.

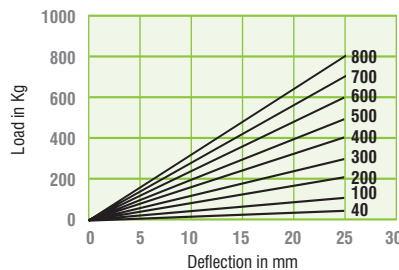
**NB:** For normal working conditions it is recommended Mountings are loaded up to a maximum deflection of 20mm



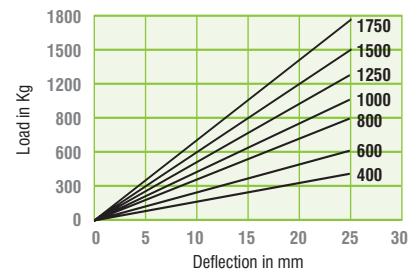
**ESS**



**ESM**



**ESL**



## Enclosed Spring Mounts Fitting Instructions

The mountings are suitable for static applications and incorporate a height adjusting device to allow the machine to be levelled during installation. Where possible mountings should be fitted on site, alternatively transit chocks should be fitted to the equipment during transportation.

The height adjusting bolts should be removed and all mountings placed in their correct floor position. The machine is now lowered into position, ensuring correct alignment of mounting fixing holes with brackets.

With lock nuts & washers fitted to the height adjusting bolts, they can now be screwed into the mounting fixing holes until resistance is encountered.

The level of the machine can now be checked and if needed adjusted by screwing down the height adjusting bolts 1 or 2 turns at a time, in sequence at each mounting. When complete, lock nuts should be locked in position.

If during run-up or run-down the movement of the machine is considered excessive, snubbing of the movement can be increased by screwing down the height adjusting bolts by equal amounts, 1 or 2 turns at a time, thereby raising the

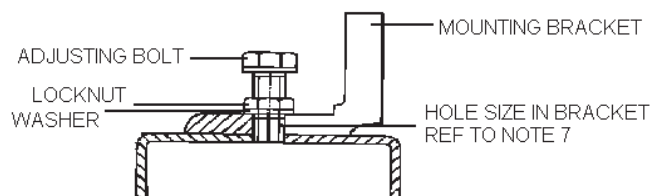
height of the mounting top cap which reduces the gap with the snubber ring.

Mountings should not be raised above their maximum working height, if additional adjustment is required packing should be fitted to the top or to the bottom of the mounting.

For the mountings to isolate efficiently it is important that all connections and services to the machine should be flexible.

The maximum hole size in the mounting bracket should not be greater than 16mm Dia. If the hole is larger a suitable packing washer should be fitted below the mounting bracket.

For further information and advice please contact our technical department.



DATA SHEET ES/1 2011. Max compression load in Kg deflection in mm.

This information is for guidance only. Customers are recommended to contact us for further technical information on products and applications. We reserve the right to alter specifications or withdraw products without notice.