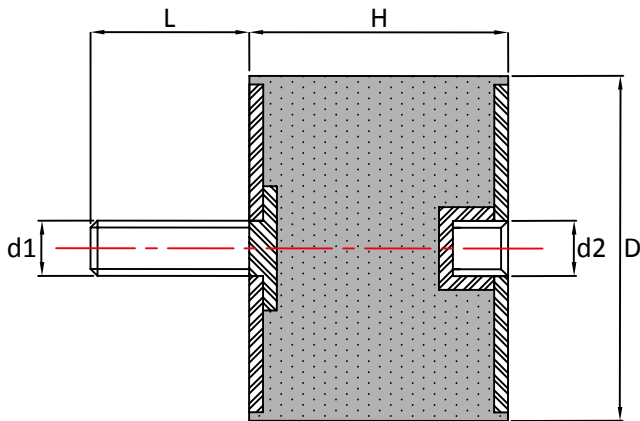


# Male Female Bobbins



| Part No  | D x H   | d1 x L   | d2  | 45° Shore A | 60° Shore A | 70° Shore A | mm  |
|----------|---------|----------|-----|-------------|-------------|-------------|-----|
| 1008MF10 | 10 x 08 | M4 x 10  | M4  | 2.4         | 4.4         | 6.2         | 0.6 |
| 1010MF06 | 10 x 10 | M4 x 06  | M4  | 2.1         | 4.0         | 5.5         | 0.8 |
| 1513MF10 | 15 x 13 | M4 x 10  | M4  | 4.0         | 7.8         | 10.8        | 1.1 |
| 1515MF10 | 15 x 15 | M4 x 10  | M4  | 6.0         | 11.0        | 15.4        | 1.3 |
| 2015MF18 | 20 x 15 | M6 x 18  | M6  | 9.3         | 17.5        | 24.0        | 1.2 |
| 2020MF18 | 20 x 20 | M6 x 18  | M6  | 7.2         | 13.4        | 18.5        | 1.6 |
| 2025MF18 | 20 x 25 | M6 x 18  | M6  | 6           | 12          | 17.5        | 2.1 |
| 2030MF18 | 20 x 30 | M6 x 18  | M6  | 5.5         | 9.9         | 13.9        | 2.6 |
| 2515MF18 | 25 x 15 | M6 x 18  | M6  | 18.5        | 35.0        | 49.0        | 1.2 |
| 2520MF20 | 25 x 20 | M8 x 20  | M8  | 16.5        | 30.0        | 40.0        | 1.6 |
| 2525MF18 | 25x 25  | M6 x 18  | M6  | 12.8        | 24.0        | 33.0        | 2.1 |
| 2530MF20 | 25 x 30 | M8 x 20  | M8  | 11.8        | 23.0        | 30.0        | 2.7 |
| 3015MF20 | 30 x 15 | M8 x 20  | M8  | 23.0        | 42.0        | 59.0        | 1.1 |
| 3020MF20 | 30 x 20 | M8 x 20  | M8  | 21.0        | 39.0        | 53.0        | 1.6 |
| 3025MF20 | 30 x 25 | M8 x 20  | M8  | 17.5        | 30.0        | 41.0        | 2.1 |
| 3030MF20 | 30 x 30 | M8 x 20  | M8  | 15.5        | 29.0        | 39.0        | 2.6 |
| 3040MF20 | 30 x 40 | M8 x 20  | M8  | 14.5        | 28.0        | 37.0        | 3.6 |
| 4020MF23 | 40 x 20 | M8 x 23  | M8  | 42.0        | 79.0        | 109.0       | 1.6 |
| 4020MF25 | 40 x 20 | M10 x 25 | M10 | 42.0        | 79.0        | 109.0       | 1.6 |
| 4025MF20 | 40 x 25 | M8 x 20  | M8  | 39.0        | 73.0        | 100.0       | 2.1 |
| 4030MF23 | 40 x 30 | M8 x 23  | M8  | 34.0        | 64.0        | 89.0        | 2.6 |
| 4030MF25 | 40 x 30 | M10 x 25 | M10 | 34.0        | 64.0        | 89.0        | 2.6 |
| 4035MF23 | 40 x 35 | M8 x 23  | M8  | 31.0        | 57.0        | 80.0        | 3.1 |
| 4035MF25 | 40 x35  | M10 x 25 | M10 | 31.0        | 57.0        | 80.0        | 3.1 |
| 4040MF20 | 40 x 40 | M8 x 20  | M8  | 30.0        | 55.0        | 76.0        | 3.6 |
| 4040MF25 | 40 x 40 | M10 x 25 | M10 | 30.0        | 55.0        | 76.0        | 3.6 |
| 5020MF28 | 50 x 20 | M10 x 28 | M10 | 87.0        | 164.0       | 226.0       | 1.5 |
| 5025MF25 | 50 x 25 | M10 x 25 | M10 | 81.0        | 151.0       | 209.0       | 2.0 |
| 5030MF25 | 50 x 30 | M10 x 25 | M10 | 70.0        | 129.0       | 178.0       | 2.5 |
| 5035MF25 | 50 x 35 | M10 x 25 | M10 | 61.0        | 113.0       | 156.0       | 3.0 |
| 5040MF25 | 50 x 40 | M10 x 25 | M10 | 50.0        | 94.0        | 130.0       | 3.5 |

| Part No    | D x H     | d1 x L   | d2  | 45° Shore A | 60° Shore A | 70° Shore A | mm  |
|------------|-----------|----------|-----|-------------|-------------|-------------|-----|
| 5045MF28   | 50 x 45   | M10 x 28 | M10 | 45.0        | 84.0        | 117.0       | 4.0 |
| 5050MF25   | 50 x 50   | M10 x 25 | M10 | 41.0        | 78.0        | 107.0       | 4.5 |
| 6025MF25   | 60 x 25   | M10 x 25 | M10 | 126.0       | 234.0       | 323.0       | 2.0 |
| 6030MF25   | 60 x 30   | M10 x 25 | M10 | 111.0       | 206.0       | 284.0       | 2.5 |
| 6036MF25   | 60 x 36   | M10 x 25 | M10 | 109.0       | 203.0       | 280.0       | 3.1 |
| 6036MF37   | 60 x 36   | M12 x 37 | M12 | 109.0       | 203.0       | 280.0       | 3.1 |
| 6040MF25   | 60 x 40   | M10 x 25 | M10 | 101.0       | 188.0       | 256.0       | 3.5 |
| 6040MF37   | 60 x 40   | M12 x 37 | M12 | 101.0       | 188.0       | 256.0       | 3.5 |
| 6045MF25   | 60 x 45   | M10 x 25 | M10 | 92.0        | 171.0       | 237.0       | 4.0 |
| 6535MF25   | 65 x 35   | M10 x 25 | M10 | 133.0       | 247.0       | 342.0       | 3.0 |
| 6540MF37   | 65 x 40   | M12 x 37 | M12 | 118.0       | 216.0       | 298.0       | 3.5 |
| 6545MF37   | 65 x 45   | M12 x 37 | M12 | 103.0       | 190.0       | 264.0       | 4.0 |
| 6550MF37   | 65 x 50   | M12 x 37 | M12 | 88.0        | 163.0       | 226.0       | 4.5 |
| 7030MF37   | 70 x 30   | M12 x 37 | M12 | 175.0       | 326.0       | 445.0       | 2.4 |
| 7040MF25   | 70 x 40   | M10 x 25 | M10 | 143.0       | 266.0       | 367.0       | 3.4 |
| 7040MF37   | 70 x 40   | M12 x 37 | M12 | 143.0       | 266.0       | 367.0       | 3.4 |
| 7045MF25   | 70 x 45   | M10 x 25 | M10 | 129.0       | 239.0       | 321.0       | 3.9 |
| 7045MF37   | 70 x 45   | M12 x 37 | M12 | 129.0       | 239.0       | 321.0       | 3.9 |
| 7050MF37   | 70 x 50   | M12 x 37 | M12 | 117.0       | 217.0       | 300.0       | 4.4 |
| 7060MF37   | 70 x 60   | M12 x 37 | M12 | 116.0       | 214.0       | 296.0       | 5.4 |
| 7525MF37   | 75 x 25   | M12 x 37 | M12 | 221.0       | 420.0       | 577.0       | 1.9 |
| 7540MF37   | 75 x 40   | M12 x 37 | M12 | 154.0       | 288.0       | 397.0       | 3.4 |
| 7550MF37   | 75 x 50   | M12 x 37 | M12 | 147.0       | 276.0       | 381.0       | 4.4 |
| 7555MF37   | 75 x 55   | M12 x 37 | M12 | 128.0       | 242.0       | 333.0       | 4.9 |
| 10050MF44  | 100 x 50  | M16 x 44 | M16 | 300.0       | 540.0       | 750.0       | 4.2 |
| 10055MF44  | 100 x 55  | M16 x 44 | M16 | 275.0       | 515.0       | 710.0       | 4.7 |
| 10060MF44  | 100 x 60  | M16 x 44 | M16 | 265.0       | 480.0       | 670.0       | 5.2 |
| 10075MF44  | 100 x 75  | M16 x 44 | M16 | 220.0       | 390.0       | 540.0       | 6.7 |
| 100100MF44 | 100 x 100 | M16 x 44 | M16 | 170.0       | 300.0       | 420.0       | 9.2 |
| 12555MF44  | 125 x 55  | M16 x 44 | M16 | 400.0       | 800.0       | 1150.0      | 4.7 |
| 15055MF41  | 150 x 55  | M16 x 41 | M16 | 505.0       | 920.0       | 1296.0      | 4.7 |
| 15075MF44  | 150 x 75  | M16 x 44 | M16 | 400.0       | 720.0       | 1000.0      | 6.7 |

Max compression load in Kg deflection in mm.

This information is for guidance only. Customers are recommended to contact us for further technical information on products and applications.

We reserve the right to alter specifications or withdraw products without notice.