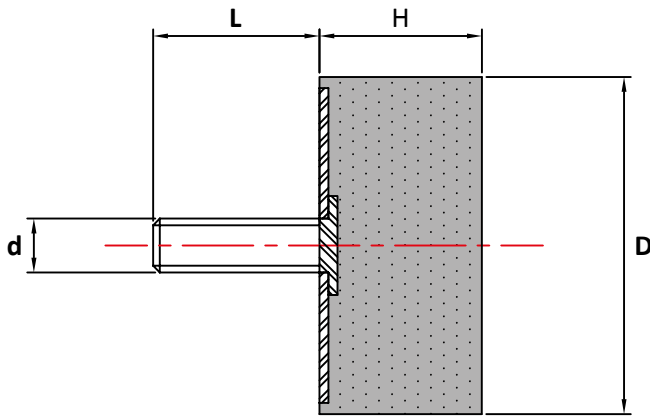


Male Flat Buffer



Part No	D x H	d x L	45° Shore A	60° Shore A	70° Shore A	mm
0808MFB06	08 x 08	M3 x 06	7.5	10.5	15.0	2.0
1008MFB10	10 x 08	M4 x 10	9.5	14.0	19.5	2.0
1508MFB10	15 x 08	M4 x 10	31.0	45.5	63.0	2.0
1513MFB10	15 x 13	M4 x 10	14.5	22.5	31.0	3.3
1618MFB10	16 x 18	M4 x 10	16.0	23.5	33.0	5.0
2008MFB18	20 x 08	M6 x 18	46.5	68.0	94.0	2.0
2012MFB18	20 x 12	M6 x 18	40.0	59.5	82.0	3.0
2015MFB18	20 x 15	M6 x 18	34.0	51.5	71.0	3.75
2020MFB18	20 x 20	M6 x 18	26.0	39.0	53.5	5.0
2025MFB18	20 x 25	M6 x 18	27.0	41.0	56.5	6.25
2030MFB18	20 x 30	M6 x 18	21.5	31.0	43.5	7.5
2508MFB18	25 x 08	M6 x 18	114.0	190.0	231.0	2.0
2510MFB20	25 x 10	M8 x 20	106.5	155.0	213.5	2.5
2515MFB18	25 x 15	M6 x 18	68.0	104.0	145.5	3.75
2518MFB18	25 x 18	M6 x 18	69.5	102.0	141.0	4.25
2520MFB18	25 x 20	M6 x 18	63.0	93.0	126.0	5.0
2520MFB20	25 x 20	M8 x 20	63.0	93.0	126.0	5.0
2525MFB18	25 x 25	M6 x 18	44.5	66.0	92.0	6.25
2530MFB20	25 x 30	M8 x 20	39.0	58.0	77.5	7.5
3012MFB20	30 x 12	M8 x 20	97.0	139.5	201.0	3.25
3015MFB20	30 x 15	M8 x 20	88.3	132.0	184.5	3.75
3017MFB20	30 x 17	M8 x 20	82.0	121.0	167.0	4.25
3020MFB20	30 x 20	M8 x 20	75.5	113.5	155.0	5.00
3022MFB20	30 x 22	M8 x 20	69.0	102.0	140.5	5.50
3025MFB20	30 x 25	M8 x 20	63.0	97.0	131.0	6.25
3030MFB20	30 x 30	M8 x 20	52.5	77.5	106.5	7.50
3040MFB20	30 x 40	M8 x 20	53.5	78.5	108.5	10.0
4020MFB23	40 x 20	M8 x 23	155.0	233.0	333.5	5.0
4020MFB25	40 x 20	M10 x 25	155.0	233.0	333.5	5.0
4025MFB25	40 x 25	M10 x 25	136.0	204.0	281.5	6.3
4028MFB23	40 x 28	M8 x 23	124.0	184.5	252.0	6.8
4030MFB23	40 x 30	M8 x 23	116.5	174.5	242.5	7.5
4030MFB25	40 x 30	M10 x 25	116.5	174.5	242.5	7.5
4035MFB23	40 x 35	M8 x 23	103.0	153.5	213.5	8.8
4040MFB23	40 x 40	M8 x 23	97.0	145.5	199.0	10.0

Part No	D x H	d x L	45° Shore A	60° Shore A	70° Shore A	mm
4040MFB25	40 x 40	M10 x 25	97.0	145.5	199.0	10.0
5015MFB25	50 x 15	M10 x 25	283.0	422.0	581.0	3.8
5018MFB25	50 x 18	M10 x 25	360.0	480.0	690.0	4.0
5020MFB28	50 x 20	M10 x 28	343.0	511.0	705.0	5.0
5021MFB25	50 x 21	M10 x 25	344.0	514.0	708.0	5.3
5025MFB25	50 x 25	M10 x 25	300.5	446.0	616.0	6.3
5030MFB25	50 x 30	M10 x 25	247.0	364.0	504.0	7.5
5040MFB25	50 x 40	M10 x 25	170.0	252.0	349.0	10.0
5045MFB25	50 x 45	M10 x 25	150.5	223.0	310.5	11.3
5050MFB25	50 x 50	M10 x 25	136.0	203.5	281.5	12.5
6025MFB25	60 x 25	M10 x 25	514.0	669.5	1057.0	6.3
6030MFB37	60 x 30	M12 x 37	436.0	640.0	883.0	7.5
6040MFB25	60 x 40	M10 x 25	378.0	562.5	766.0	10.0
6040MFB37	60 x 40	M12 x 37	378.0	562.5	766.0	10.0
6050MFB37	60 x 50	M12 x 37	300.0	446.0	616.0	12.5
7035MFB25	70 x 35	M10 x 25	548.0	873.5	1203.0	8.8
7035MFB37	70 x 35	M12 x 37	548.0	873.5	1203.0	8.8
7040MFB25	70 x 40	M10 x 25	494.5	737.0	1019.0	10.0
7040MFB37	70 x 40	M12 x 37	494.5	737.0	1019.0	10.0
7045MFB25	70 x 45	M10 x 25	436.5	650.0	873.0	11.25
7045MFB37	70 x 45	M12 x 37	436.5	650.0	873.0	11.25
7525MFB37	75 x 25	M12 x 37	883.0	1339.0	1843.0	6.25
7530MFB37	75 x 30	M12 x 37	879.0	1309.0	1807.0	7.50
7540MFB37	75 x 40	M12 x 37	533.0	960.0	1310.0	10.00
7550MFB37	75 x 50	M12 x 37	495.0	737.0	1018.5	12.50
7555MFB37	75 x 55	M12 x 37	427.0	640.0	883.0	13.76
8030MFB35	80 x 30	M14 x 35	1028.0	1552.0	2134.0	7.50
8080MFB35	80 x 80	M14 x 35	407.0	601.5	824.5	20.50
10030MFB41	100 x 30	M16 x 41	1821.0	3648.0	4920.0	7.50
10040MFB44	100 x 40	M16 x 44	1600.0	2376.0	3250.0	10.00
10050MFB41	100 x 50	M16 x 41	1358.0	2022.0	2794.0	12.50
10055MFB44	100 x 55	M16 x 44	1251.0	1891.0	2570.0	13.75
10060MFB44	100 x 60	M16 x 44	1115.0	1649.0	2275.0	15.00
100100MFB44	100 x 100	M16 x 44	630.0	936.0	1290.0	25.00

Max compression load in Kg deflection in mm.

This information is for guidance only. Customers are recommended to contact us for further technical information on products and applications.

We reserve the right to alter specifications or withdraw products without notice.