

Flanged Circular Mountings



Flanged Circular Mountings are a simple, low cost, compression mounting and provide good levels of vibration reduction. The mountings are produced with or without a metal interleaf. The interleaf provides increased load capacity.

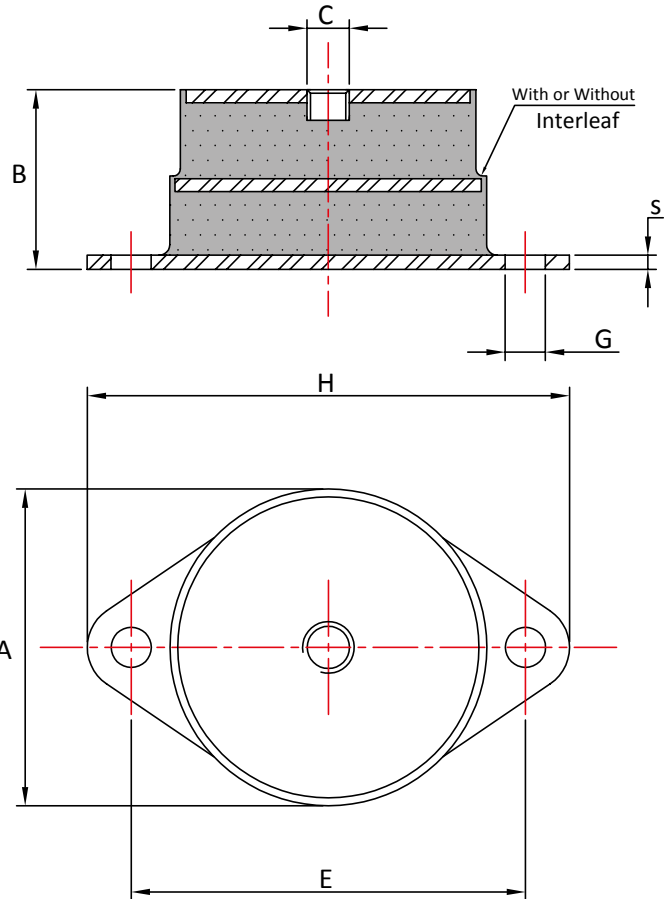
Oil and Fuel Resistant rubber compounds and Stainless Steel metals available on request.

Advantages:

- High Load Capacity
- Low Cost
- Easy to Install

Applications:

- Generating Sets
- Pumps
- Compressors
- Processing Equipment



Part No	A	B	C	E	G	H	S	60° Shore	
								Load (Kg)	Def. (mm)
FCM2	76	50	M12*	100	12.5	127	3	250	5
FCM2I	76	50	M12*	100	12.5	127	3	500	5
FCM3	81	50	M12*	112	12.5	140	3	400	5
FCM3I	81	50	M12*	112	12.5	140	3	750	5
FCM5	125	64	M20	176-184	18 x 23	220	4	1200	5
FCM5I	125	64	M20	176-184	18 x 23	220	4	2000	4

"I" denotes "Interleaf" * Mountings can be supplied with Stud

Max compression load in Kg deflection in mm.

This information is for guidance only. Customers are recommended to contact us for further technical information on products and applications. We reserve the right to alter specifications or withdraw products without notice.