

W & V Mountings

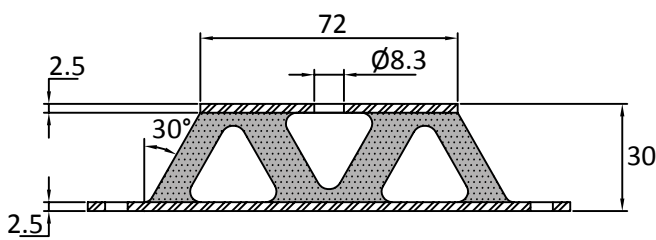
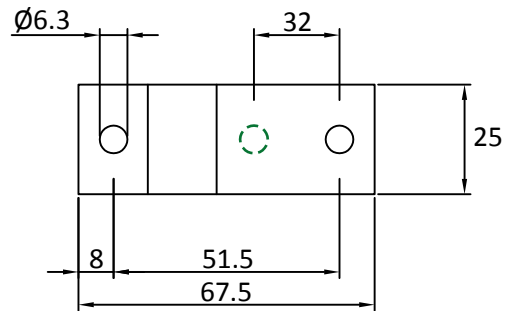
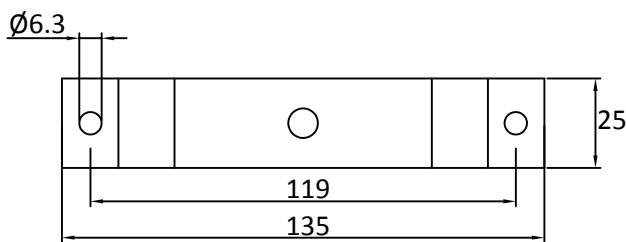
W and V type mountings are ideal for use in both compression and shear. The profile of the rubber section allow for high levels of deflection to be achieved at low loads.

Advantages:

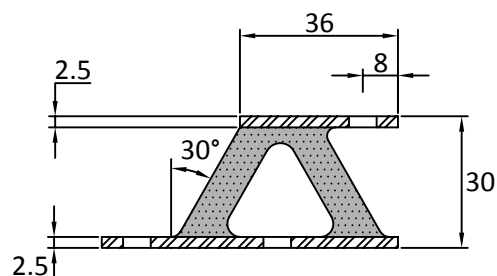
- Ideal for Lightweight Equipment
- Protect Sensitive Equipment from Shock
- Easy to Install

Applications:

- Small Generators
- Slow Speed Machines (Fans etc)
- Electronics
- Shock Protection Units



W Mount



V Mount

Part No	Compression		Shear	
	Max Load Kg	mm	Max Load Kg	mm
W7230-40	40	5	19	10
W7230-55	65	5	30	10
W7230-70	100	5	48	10
V3630-40	17	5	7.5	10
V3630-55	30	5	19	10
V3630-70	40	4.8	25	10

Max compression load in Kg deflection in mm.

This information is for guidance only. Customers are recommended to contact us for further technical information on products and applications. We reserve the right to alter specifications or withdraw products without notice.