

Armoured Plate Two Piece

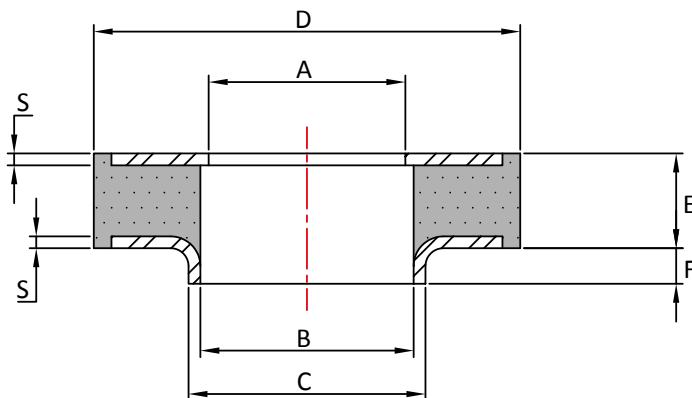
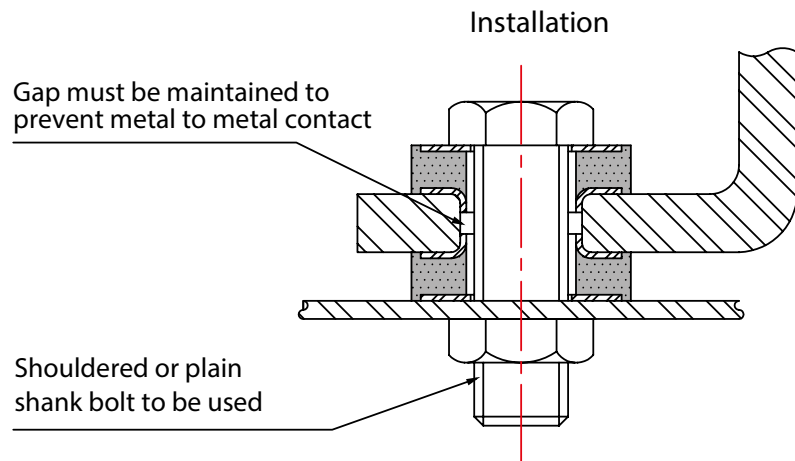


Armoured Plate Mountings are used to allow flexibility within an installation and reduce stress on brackets and fabrications. They are typically used in pairs, on opposing sides of a bracket, to allow for vibration isolation in the positive and negative direction.

The mountings have an integral wear plate that avoids premature failure due to frictional wear between the rubber and the mounting bracket. It is recommended that a shouldered or plain shank bolt is used to ensure that mounting is not over-compressed during assembly.

Applications:

- Construction Equipment
- Power Generation
- Military Vehicles
- Off-Road
- Agricultural
- Radiators



Part No	Dimensions in mm							Compression		
								Max Load (kg)		
	D	A	B	C	E	F	S	45° Shore A	60° Shore A	70° Shore A
ATP3615166	36	6	6	15	16	6	1	97	163	265
ATP3615106	36	6.2	6.2	15	10	6	1	97	163	265
ATP362083	36	16.6	16.6	20	8	3	1	66	112	183
ATP361883	36	16.6	18	20	8	3	1	66	112	183
ATP3618104	36	8.5	12	18	10	4	1	71	122	194
ATP50241210	50	16.5	20	24	12	10	1.5	138	234	377
ATP50241212	50	16.5	22	24	12	12	1	138	234	377
ATP60271310	60	20.5	24	27	13	10.5	1.5	224	387	622
ATP6027134	60	20.5	24	27	13	4	1.5	224	387	622
ATP6027304	60	20.5	24	27	30	4	1.5	224	387	622

Max compression load in Kg deflection in mm.

This information is for guidance only. Customers are recommended to contact us for further technical information on products and applications. We reserve the right to alter specifications or withdraw products without notice.