

# CDM Mountings



CDM Mountings are used in pairs, providing a simple single bolt installation. They are able to withstand high dynamic shock loads, particularly when being used on Off-Road Vehicles. The outer body incorporates a steel cup to limit vertical movement and reduce rubber stress, normally caused by bump & shock conditions.

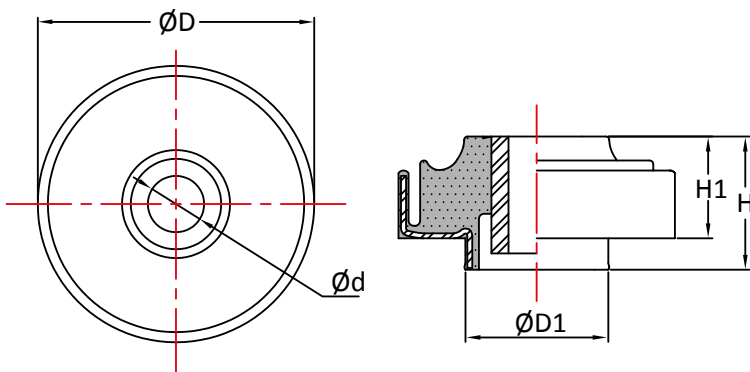
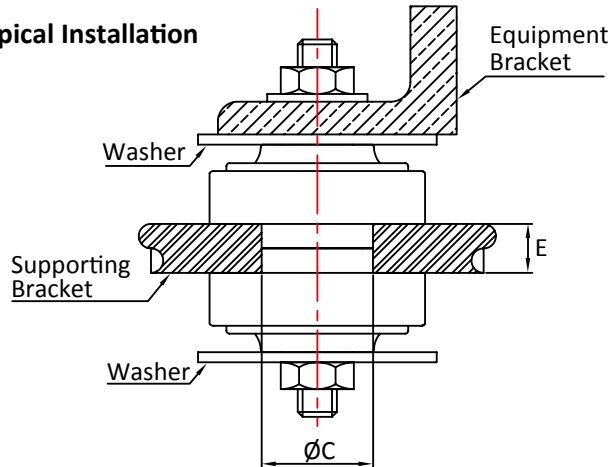
## Advantages:

- Simple Single Bolt Installation
- Ideal for Shock & Bump Conditions
- Integral Overload Metal Cup
- Excellent Vibration Reduction

## Applications:

- Off-Highway Vehicles
- Construction Vehicles
- Cabs & Engines

## Typical Installation



Part No	d	D	D1	H	H1	C	E	Bolt Size	Max. Bolt Torque N/m	Max Load (kg)
CDM66-45	18.8	66	39.8	38	29.5	40.0-40.3	19/20	M16	240	70
CDM66-55	18.8	66	39.8	38	29.5	40.0-40.3	19/20	M16	240	120
CDM66-65	18.8	66	39.8	38	29.5	40.0-40.3	19/20	M16	240	170
CDM80-45	16.2	80	37.8	41.5	32	37.9-38.2	19/20	M16	240	90
CDM80-55	16.2	80	37.8	41.5	32	37.9-38.2	19/20	M16	240	140
CDM80-65	16.2	80	37.8	41.5	32	37.9-38.2	19/20	M16	240	200
CDM110-45	22.5	110	56.9	51.5	39	57.2-57.5	25	M20 or M22	502/685	230
CDM110-55	22.5	110	56.9	51.5	39	57.2-57.5	25	M20 or M22	502/685	360
CDM110-65	22.5	110	56.9	51.5	39	57.2-57.5	25	M20 or M22	502/685	510
CDM130-45	30.2	128	69.2	58.5	43	70.75-71.25	40	M30	750	230
CDM130-55	30.2	128	69.2	58.5	43	70.75-71.25	40	M30	750	500
CDM130-65	30.2	128	69.2	58.5	43	70.75-71.25	40	M30	750	600

Max compression load in Kg deflection in mm.

This information is for guidance only. Customers are recommended to contact us for further technical information on products and applications. We reserve the right to alter specifications or withdraw products without notice.