

# Hollow Rubber Springs

Hollow Rubber Springs give high levels of deflection allowing them to provide excellent levels of shock absorption, and are available in a range of styles, sizes and rubber hardness' to suit each application. Hollow Rubber Springs are typically used as Sole Suspension Springs, Secondary Assister Springs, and Buffer & Bump Stop shock absorbers, and can be used as an alternative to a metal coil spring, where they provide the benefit of increased damping.

## Advantages:

- Excellent Shock Absorption
- Progressive Stiffness
- High Fatigue Life
- Maintenance Free
- Load Ranges from 20Kg to 10600Kg

## Applications:

- Vehicle Suspension Systems
- Commercial & Off-Road Vehicles
- Trailers
- Construction Equipment
- Agricultural Equipment

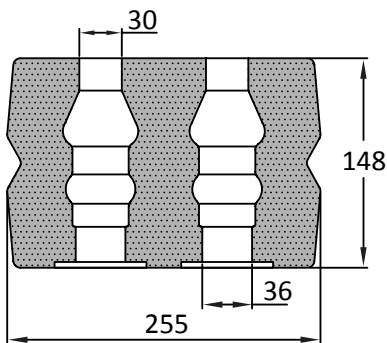


Max compression load in Kg deflection in mm.

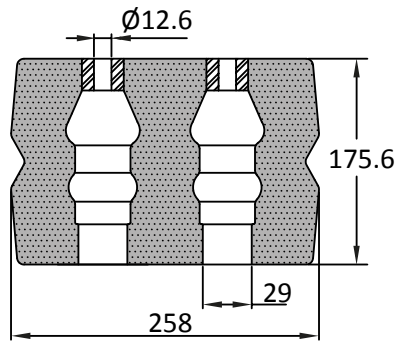
This information is for guidance only. Customers are recommended to contact us for further technical information on products and applications. We reserve the right to alter specifications or withdraw products without notice.

# Hollow Rubber Springs

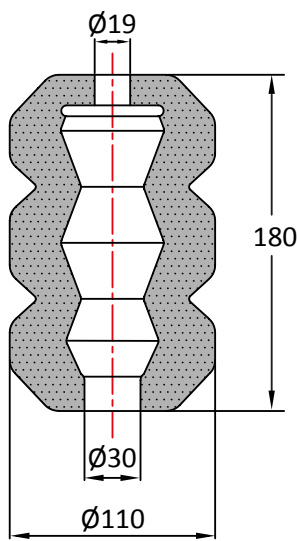
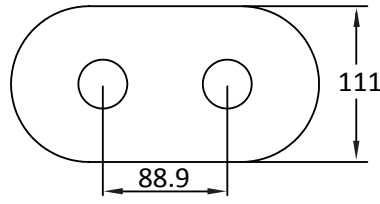
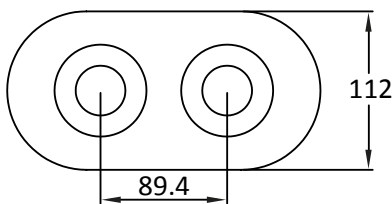
## Triple Convolution and Rectangular



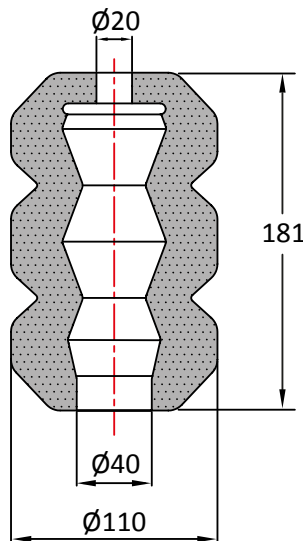
HRS225



HRS260



HRS110180



HRS110181



Part No	Nominal Static Load (Kg) i.e. as a Suspension Spring	Max Continuous Static Load (Kg) i.e. as an Assister	Max Load (Kg) Triple and Rectangular	Deflection at Max Load (mm)
HRS225	3500	10600	15900	45
HRS260	2000	9500	16595	110
HRS110180	215	915	1960	90
HRS110181	300	1275	2250	90

Max compression load in Kg deflection in mm.

This information is for guidance only. Customers are recommended to contact us for further technical information on products and applications.

We reserve the right to alter specifications or withdraw products without notice.